
Pre-Engineering: Wastewater Main, Watermain, and Storm Structure Photo Deliverable Sample

This sample demonstrates the required method for photographing storm, wastewater main, and watermain structures as part of a pre-engineering survey. The naming convention for photos must include the project number, structure number, and feature, as outlined in this example.

All photos must be named accordingly and stored in a subfolder titled “**PHOTOS**” within the final pre-engineering survey deliverable folder.

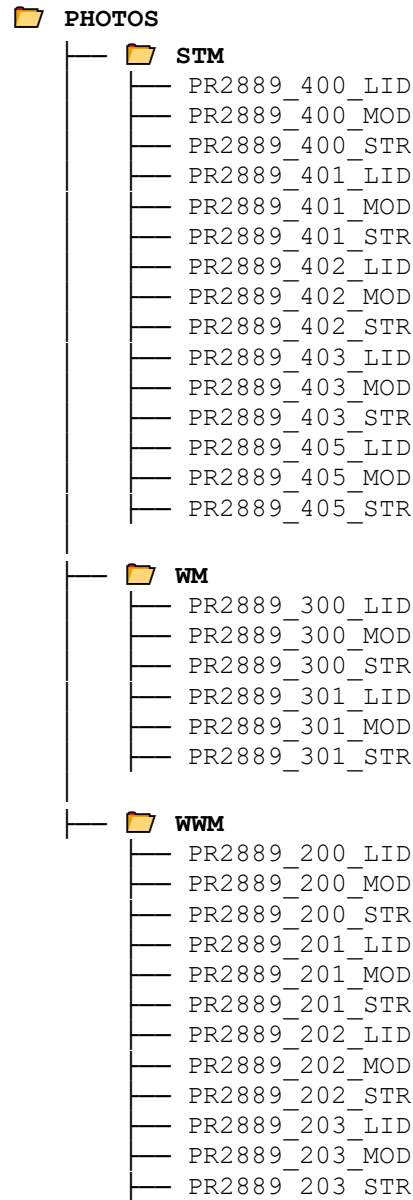
For additional details, refer to the *Survey Standards Manual – March 2025*, Section 8: *Pre-Engineering Survey – Standard Requirements*, including the following sub-sections:

- *Linear Sanitary Infrastructure*
- *Linear Water Infrastructure*
- *Linear Storm Infrastructure*

Example: Naming Convention

- **Frame & Cover Photo:** PR2889_400_LID
- **Adjustment Ring Photo:** PR2889_400_MOD
- **Benching/Bottom/Top of Main Photo:** PR2889_400_STR

Example: Photo Directory Structure and Naming Convention



Photographs: The following images are provided to illustrate the required photography standards. The order may not directly correspond to the directory structure above or relate to a specific example.

STM Photographs:



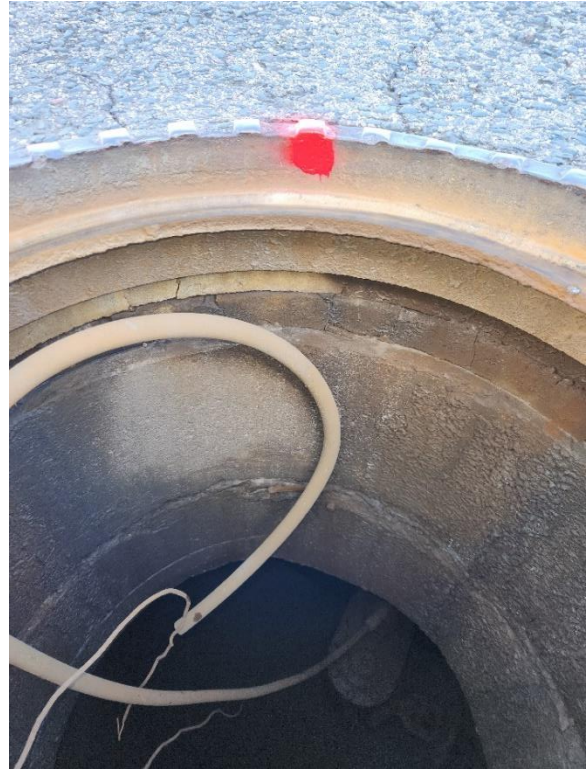






WM Photographs :





WWM Photographs:







